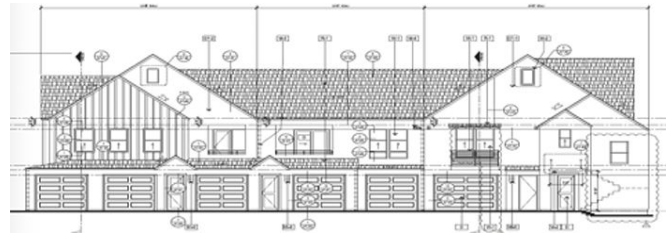
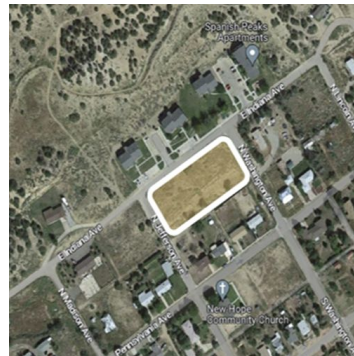




Loma Vista Apartments

Walsenburg (Huerfano County)



CHAI Role

Equity Partner

Project & Financing Team

Louis Lukondi, CHAI & Construction Lender

Project type

New Construction of "Workforce" Housing

Budget

\$4.5 million

Units

17

Close date

May 2023

Households served

80 - 120% AMI

CHAI has partnered with Louis Lukondi, an independent developer and active duty US Marine, to undertake the development of the Loma Vista Apartments, a small workforce housing project serving households earning between 80% to 100% of Area Median Income. The project will be constructed on 1.1 acres of medium density residential zoned land in the rural mountain town of Walsenburg, CO south of Pueblo in Huerfano County.

Like many towns in the San Luis Valley, Walsenburg has experienced moderate population growth, housing demand, and increased economic activity and the lack of supply of housing options is a concern for many residents and public policy makers. The Loma Vista Apartments will offer high quality garden-style apartments across two 2-story buildings with communal greenspace which integrate into the existing neighborhood, and will begin construction in 2024.